



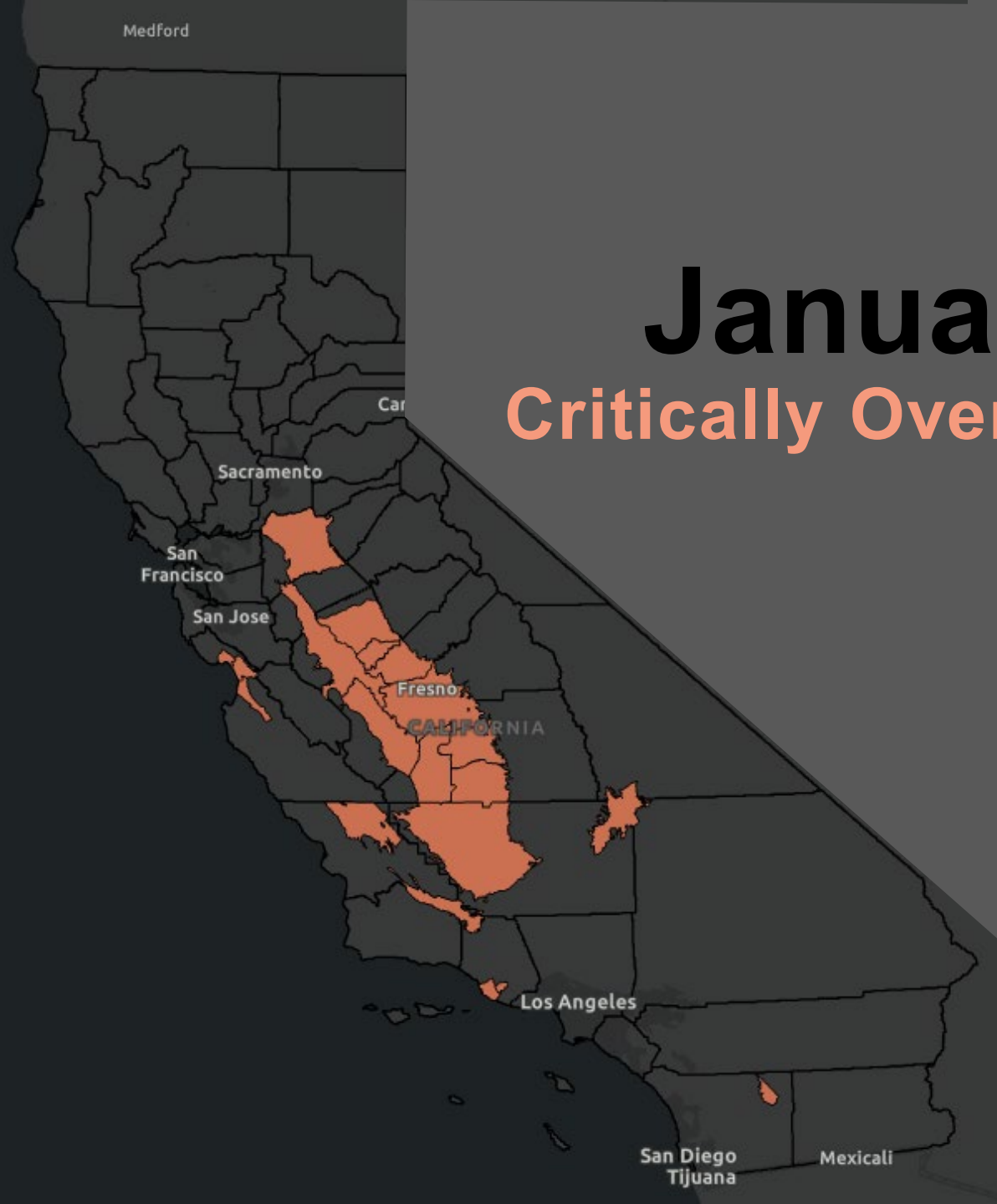
# Sustainable Groundwater Management Act (SGMA)



# Board Backstop Basics

- 1 Board only steps in when local efforts fail.
- 2 Temporarily protects the basin until locals come up-to-speed.
- 3 Backstop is triggered by SGMA deadlines.

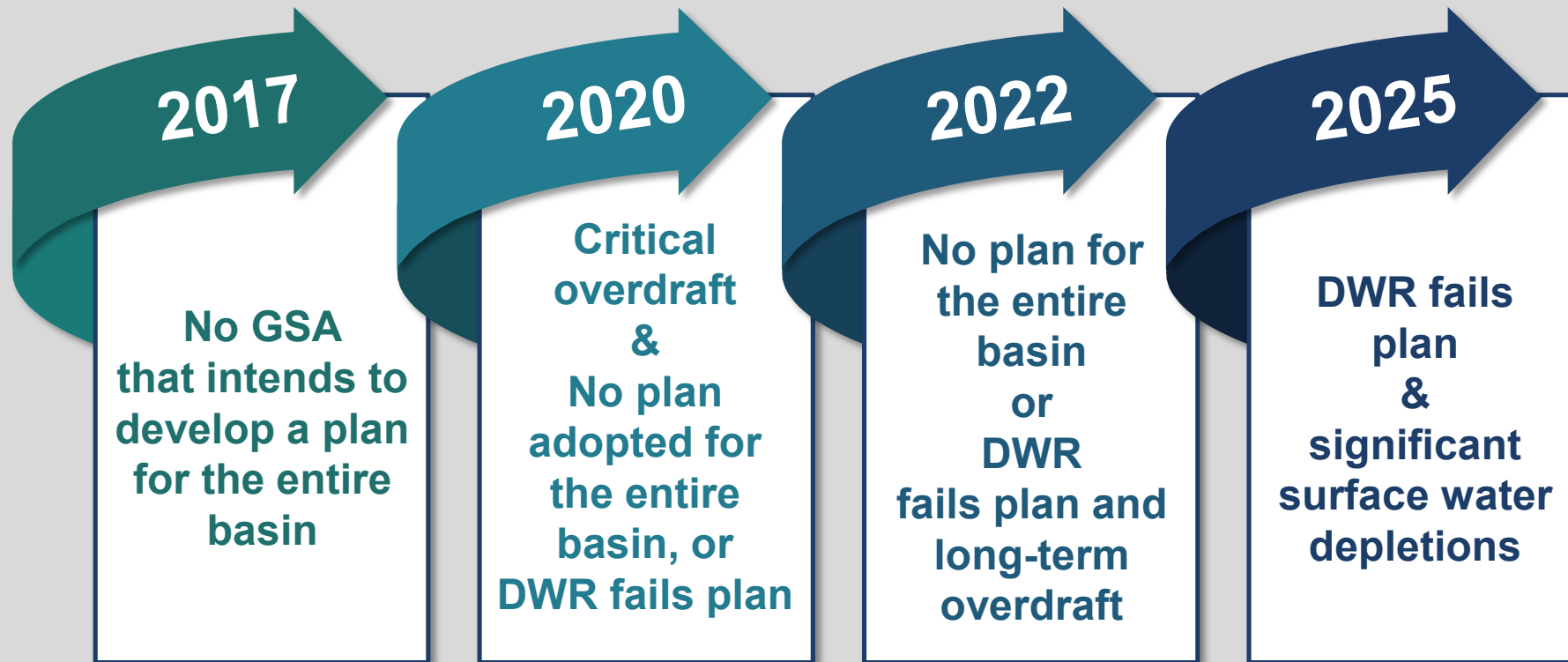




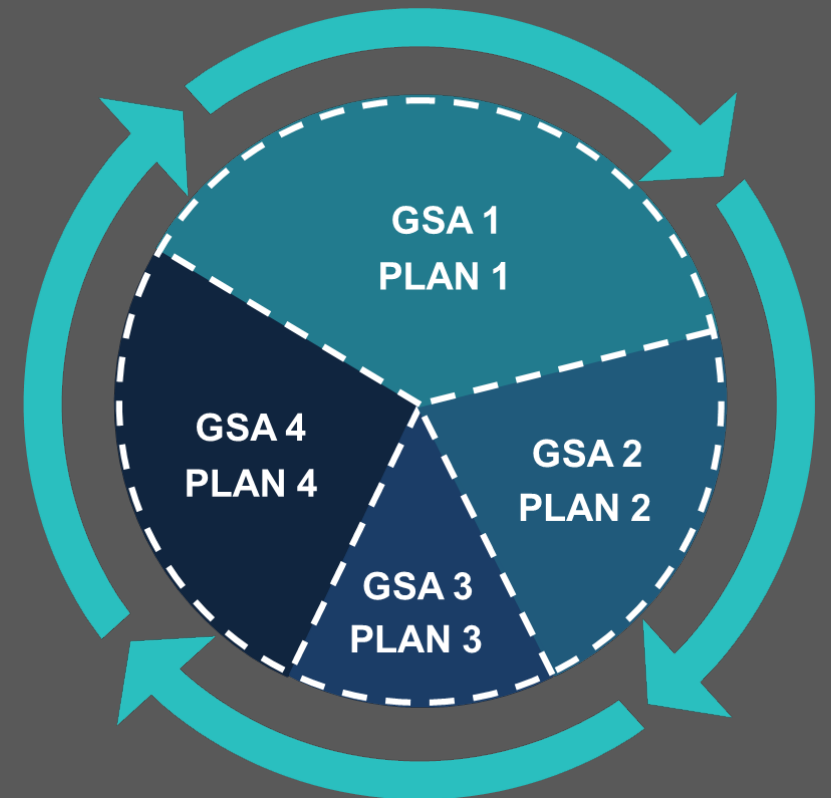
# January 2020

## Critically Overdrafted Basins

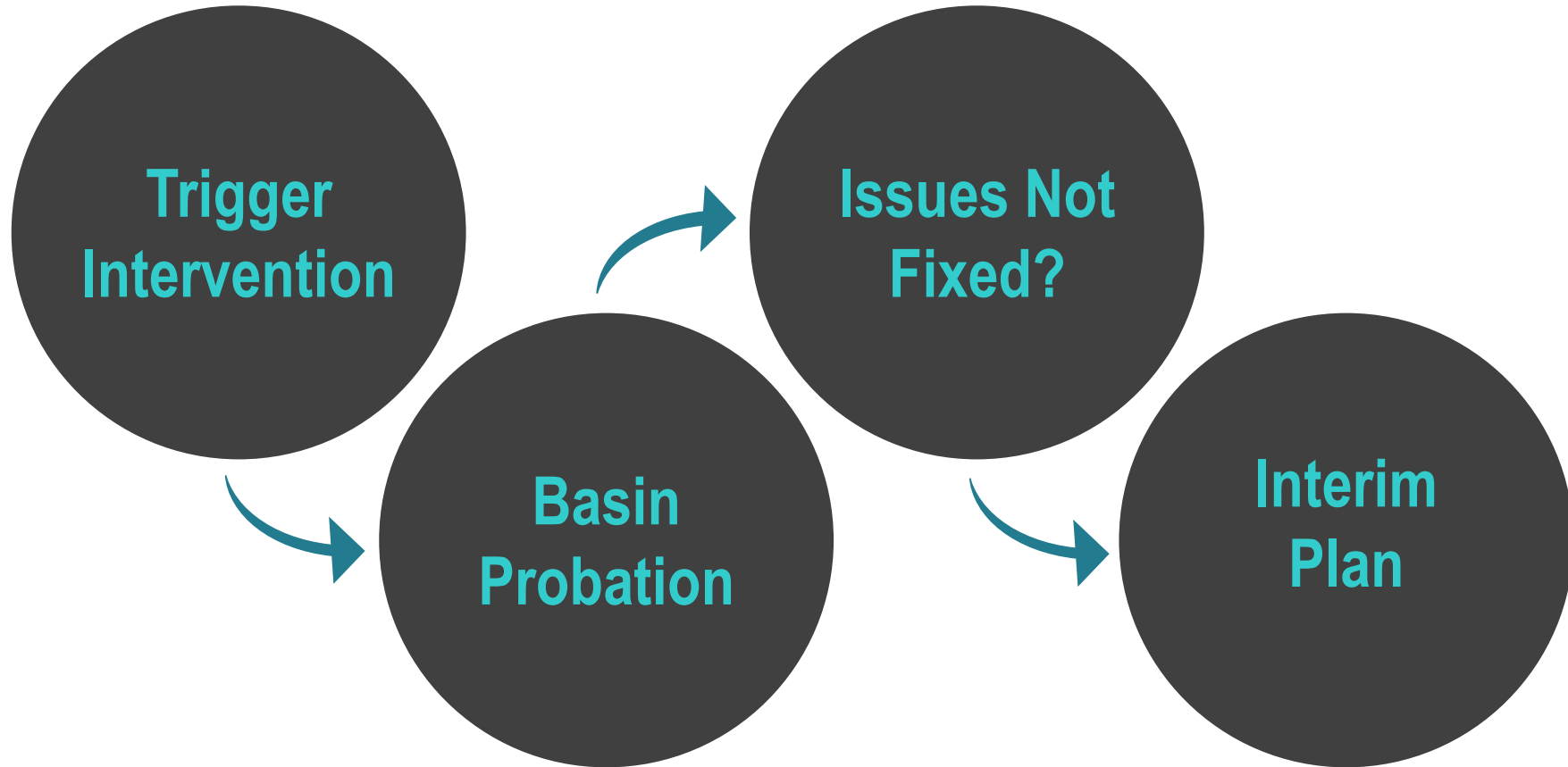
# TRIGGERING the BACKSTOP



# AVOIDING the BACKSTOP



# Backstop



# Probationary groundwater **BASIN**



State Water Board makes decisions



Opportunity to fix issues



Board gathers data



May require meters



# Extraction **REPORTS**

Reports are submitted annually.

Reports require...

- well location & capacity
- monthly extraction volumes
- place & purpose of use

Reports must be filed electronically.

**Fees required with each report.**

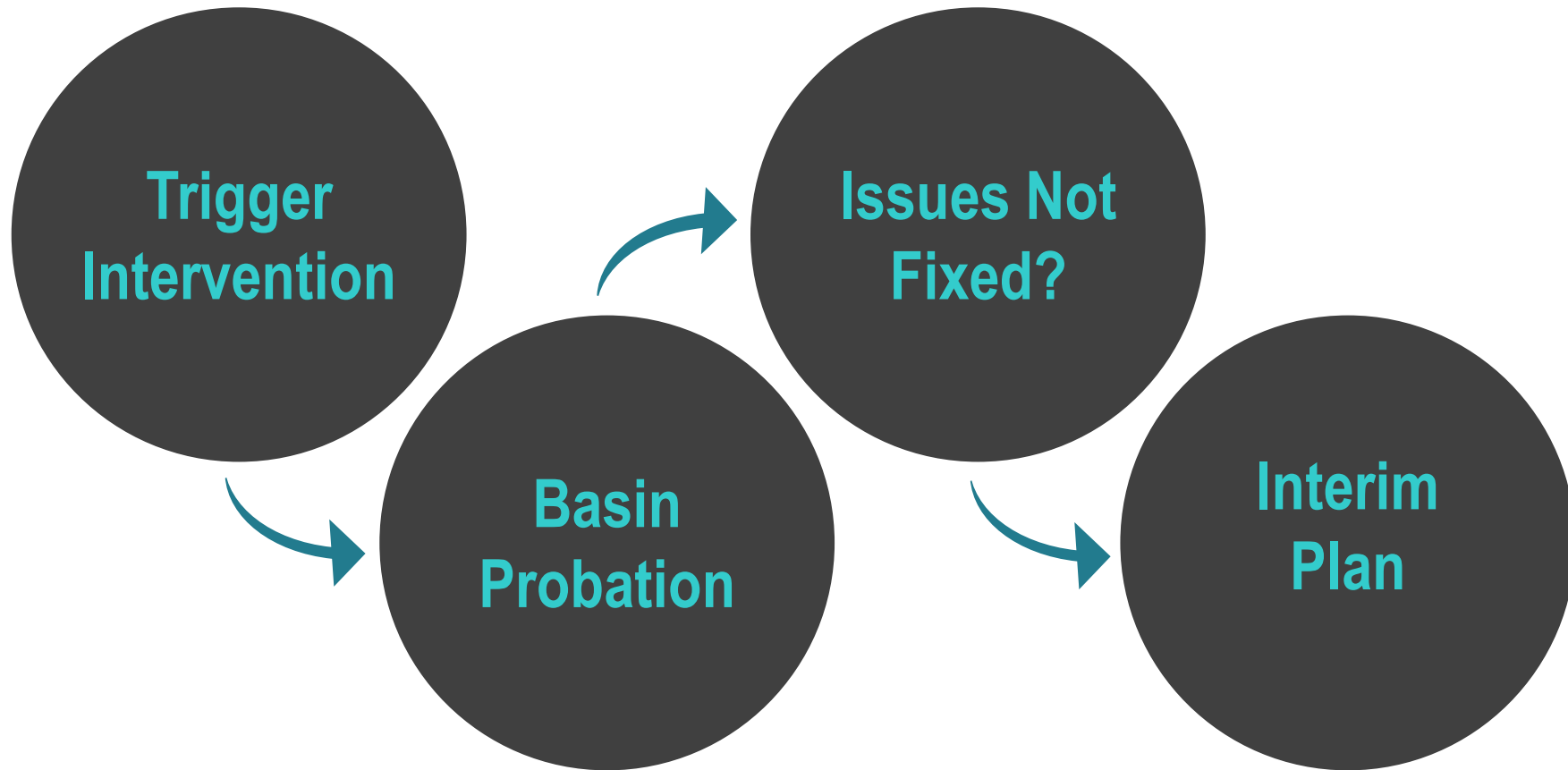


# FEES beginning in Water Year 2018



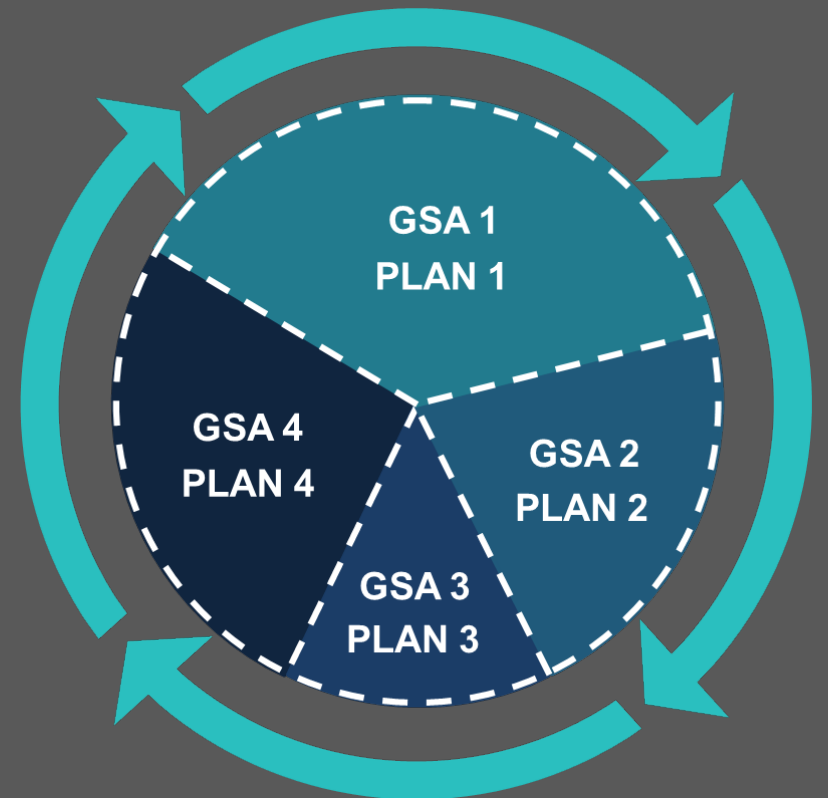
\*special studies extra

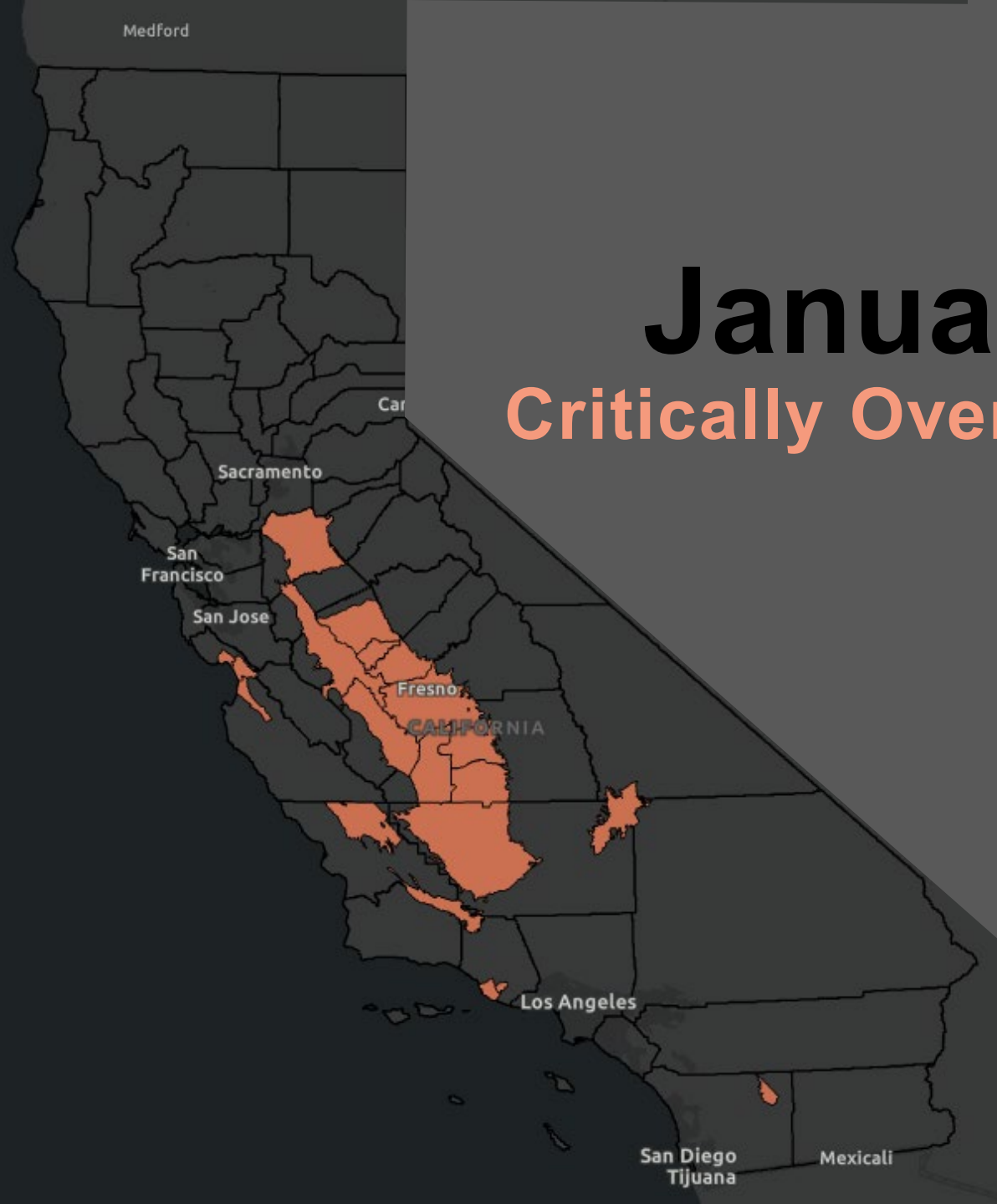
# Backstop





# AVOIDING the BACKSTOP

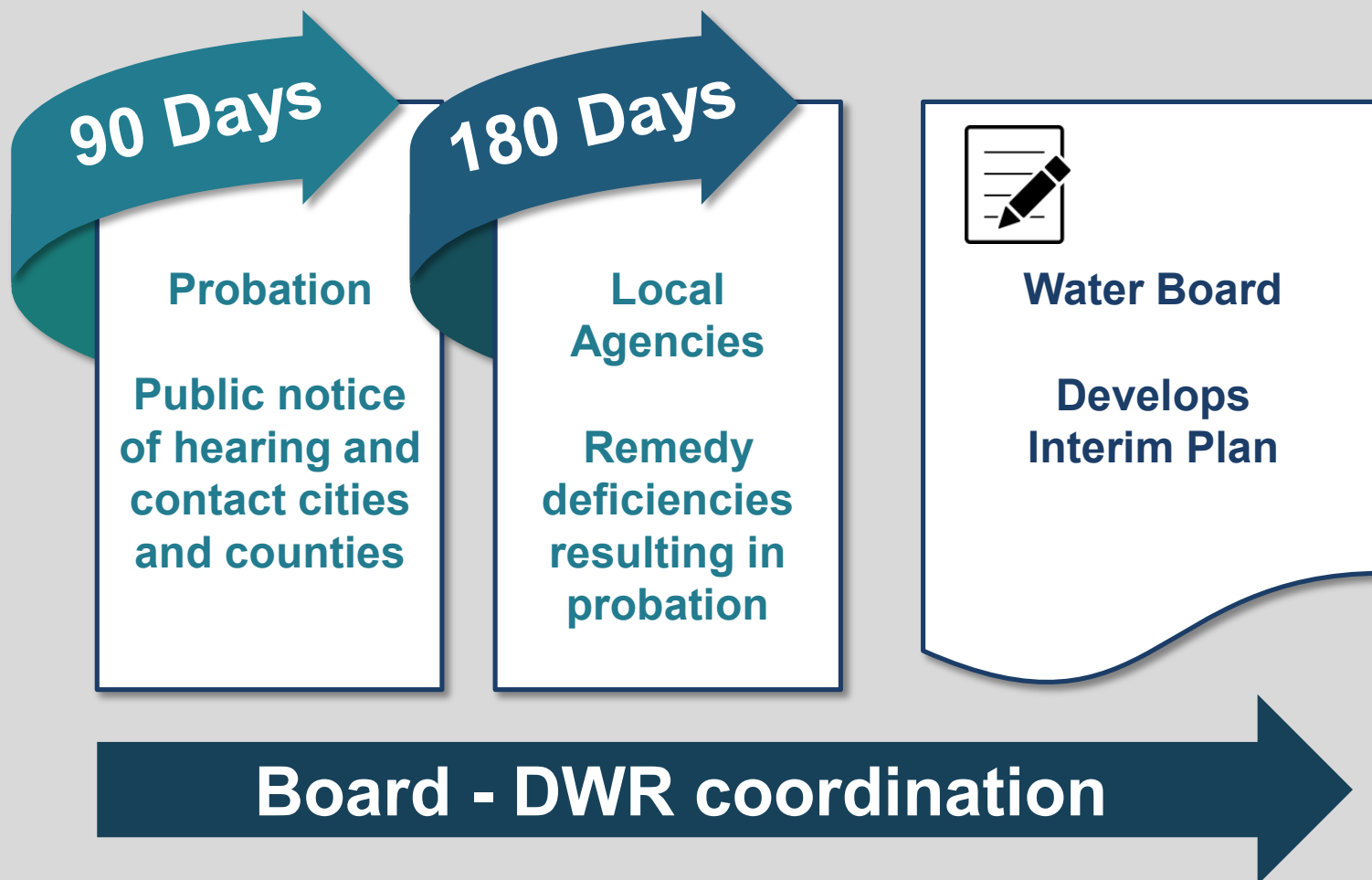




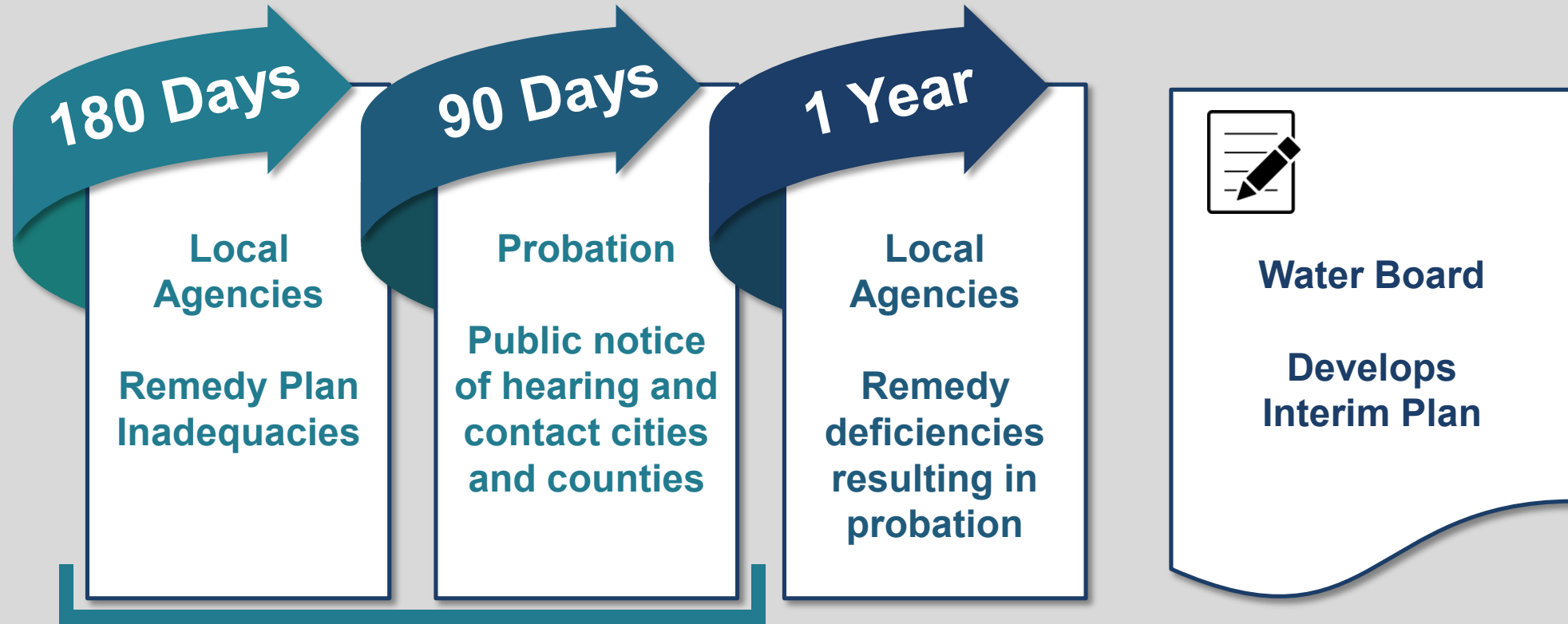
# January 2020

## Critically Overdrafted Basins

# NO Plan



# INADEQUATE Plan



**Board - DWR coordination**

# SGMA Fact Sheets

- Probationary designation and groundwater regulation
- Stakeholder inclusion
- State and regional boards basics
- Funding opportunities for GSAs
- Purpose of use for underground storage projects
- **Water Quality FAQ**
- More coming...



**“ Groundwater management  
in California is best  
accomplished locally.”**

Former Governor Jerry Brown

**Natalie Stork**  
SGMA@waterboards.ca.gov  
(916) 322-6508

**Groundwater Management  
Program**  
[www.waterboards.ca.gov/gmp](http://www.waterboards.ca.gov/gmp)

# SGMA Implementation Support

- For PowerPoint slides from the State Water Resources Control Board on,
  - Recharge permitting options
  - Water availability tool
  - State Water Board funding
  - State and Regional Board programsPlease email [SGMA@waterboards.ca.gov](mailto:SGMA@waterboards.ca.gov).