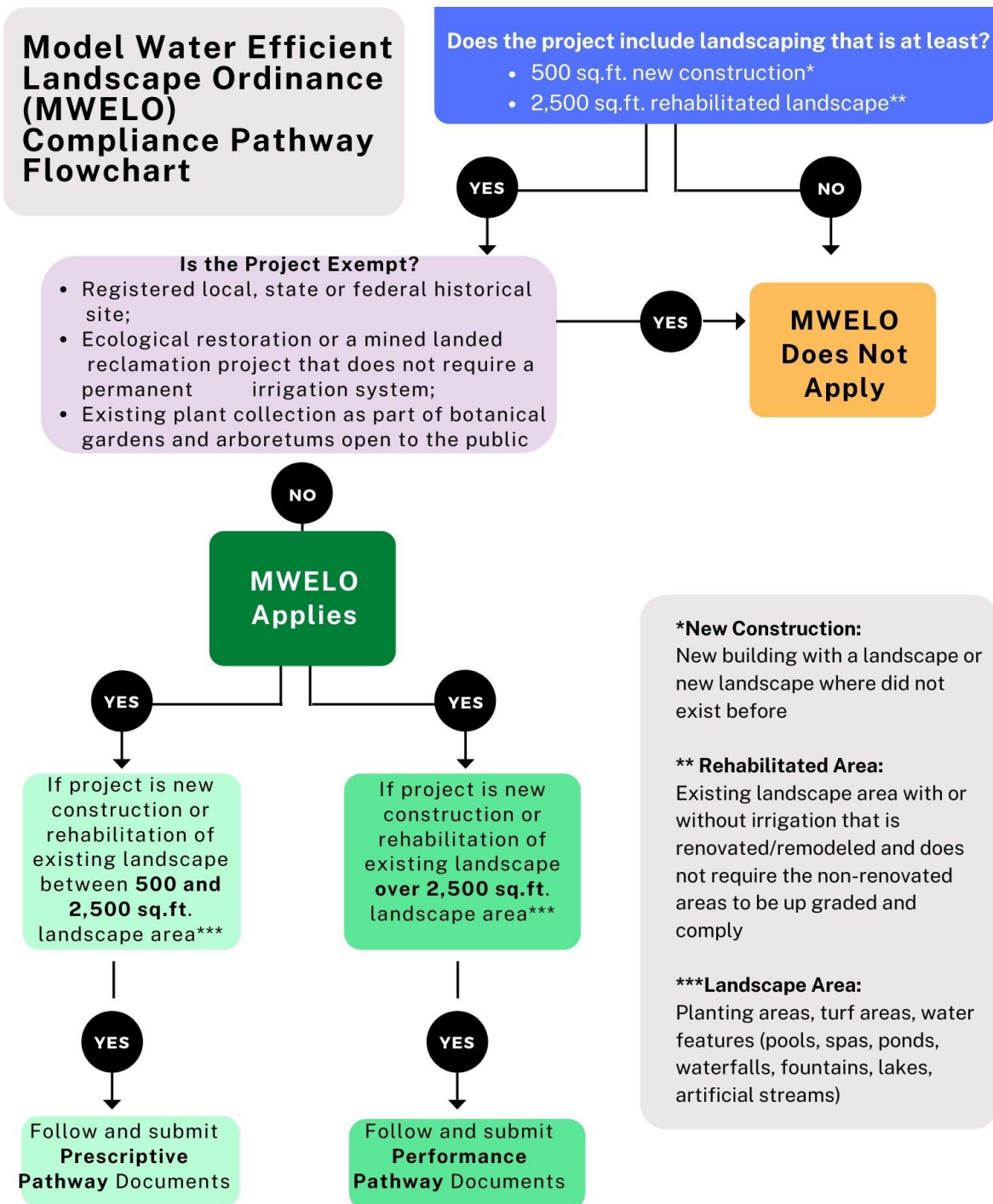


Sample Model Water Efficient Landscape Ordinance (MWELO) Compliance Pathway Flowchart



Note: Local agencies can require new or rehabilitated landscapes to follow the Performance Pathway even if the size is 500 to 2,500 sq.ft.

Note: Local agencies may choose not to adopt Prescriptive Pathway (MWELO Appendix D)

Flowchart Description:

The figure is a flowchart with eight boxes linked by arrows. One box has definitions.

The chart is multi-direction. At each step, arrows point forward to one or more boxes or right to one box.

Here the flowchart is described as lists in which the possible next steps are listed beneath each box label.

1. Does the project include landscape that is at least 500 sq.ft. new construction or 2,500 sq.ft. rehabilitated landscape?
 - a. Yes, then forward to Is the Project Exempt?
 - b. No, then forward to MWELo Does Not Apply
2. If the project is not exempt then:
 - a. Forward to MWELo Applies
3. If the project is new or rehabilitated between 500 and 2,500 sq.ft. then:
 - a. Forward to Prescriptive Pathway
4. If the project is new or rehabilitated between over 2,500 sq.ft. then:
 - a. Forward to Performance Pathway