

SWP Planning and Operations WY 2025 to Date

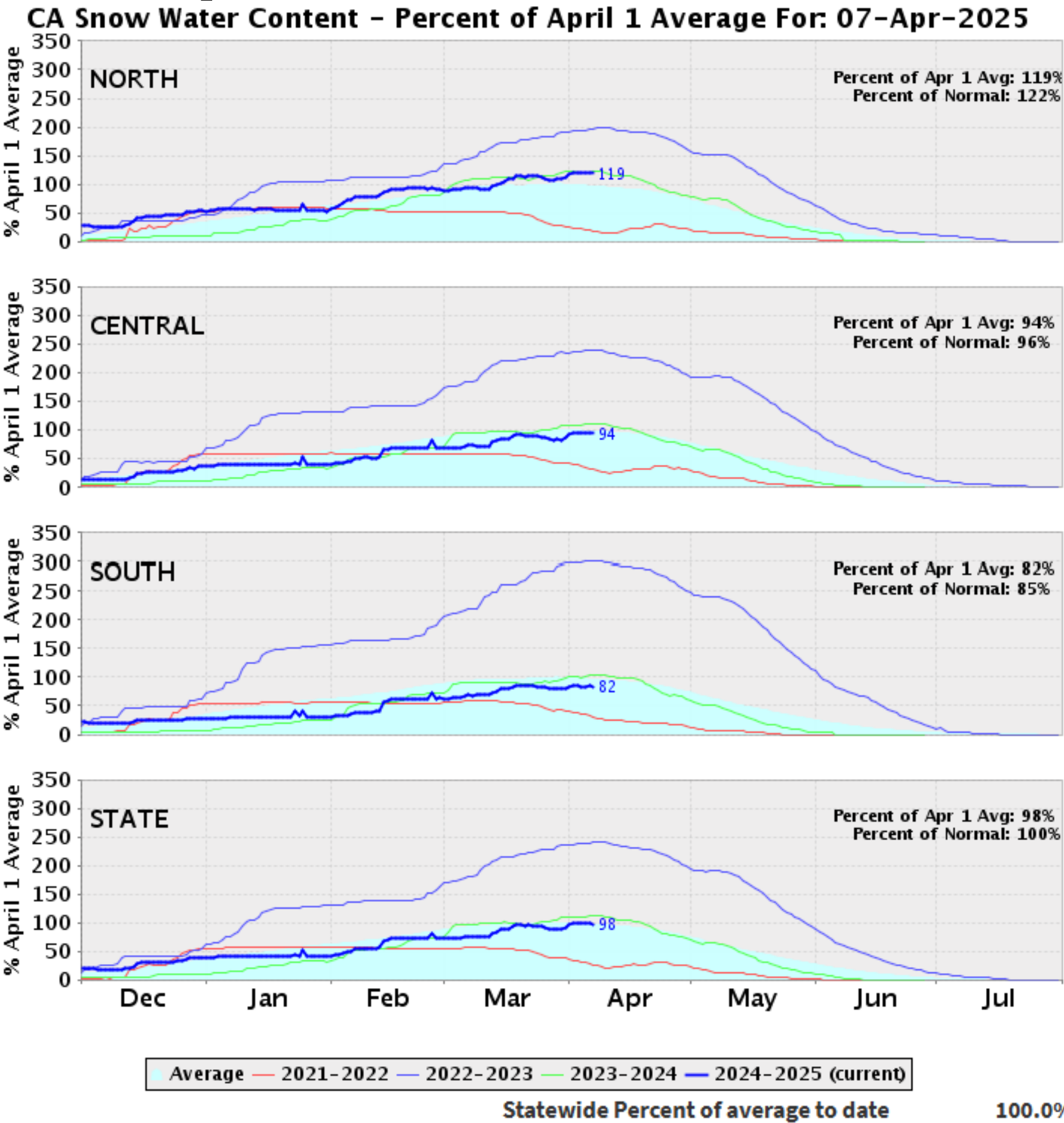
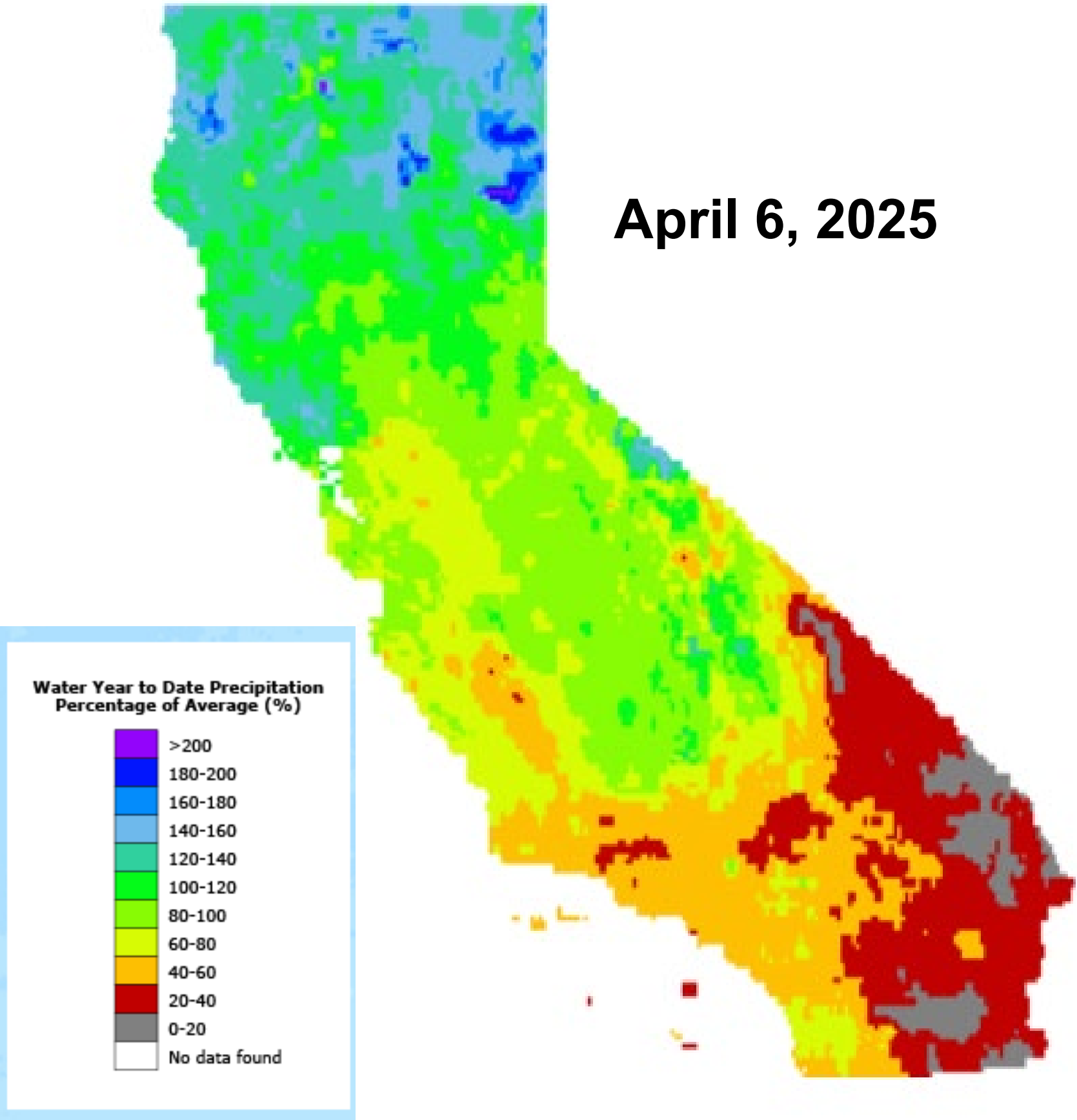


California Water
Commission
April 16, 2025



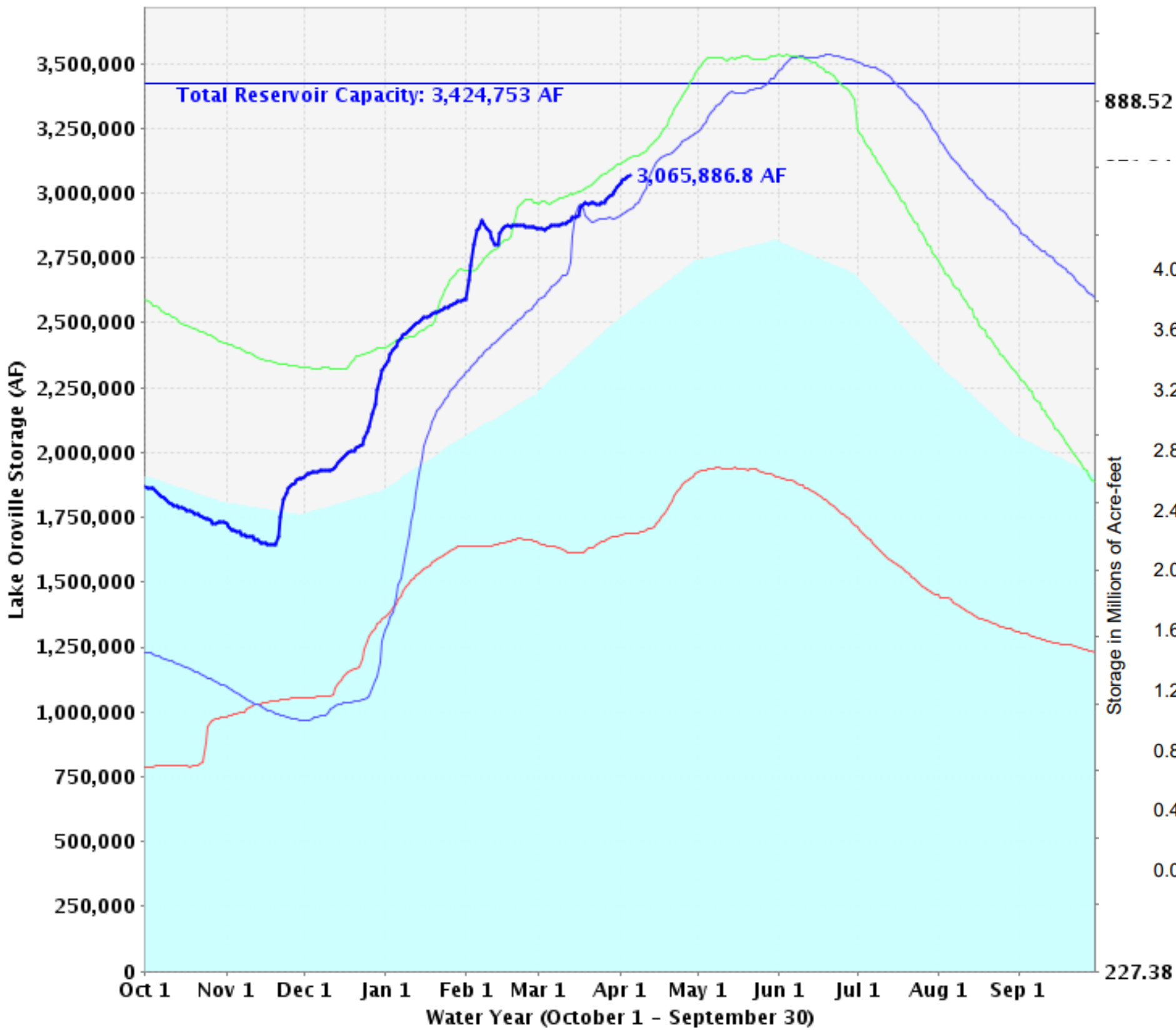
Tracy Hinojosa, PE
SWP Water Management

Precipitation and Snowpack Conditions



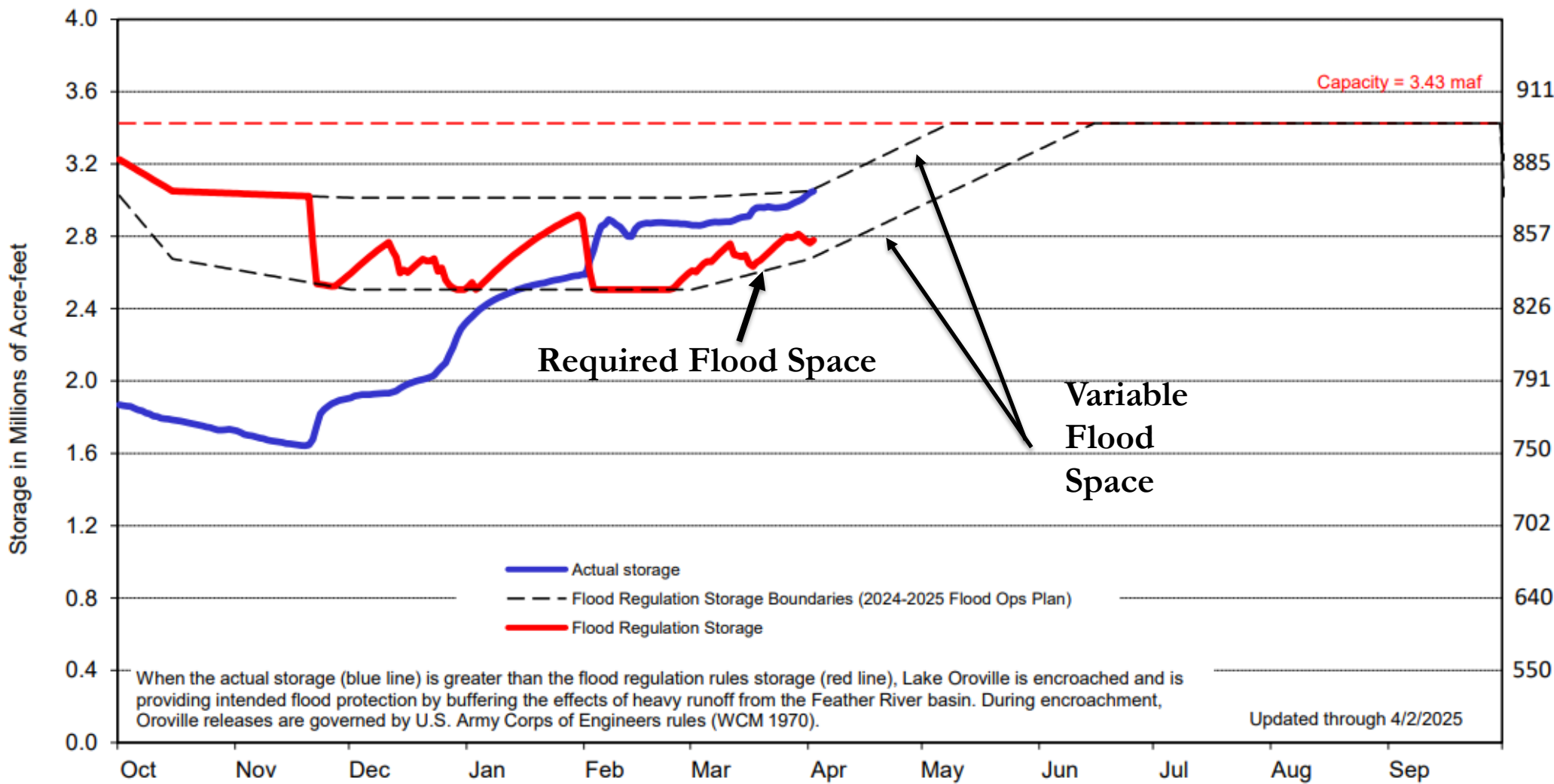
Lake Oroville WY 2025

Lake Oroville Storage Levels



Historical Average — Total Reservoir Capacity — 2021-2022 — 2022-2023 — 2023-2024 — 2024-2025(current)

Lake Oroville Storage
October 1, 2024 to September 30, 2025



2025 SWP Winter/Spring -- Planning and Operations

SWP Actions to Date

Water Supply Forecasts and SWP Allocations:

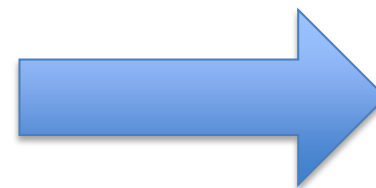
- April 1 Bulletin 120 (DWR-Div Flood Opns)
 - Sacramento Valley: Wet
 - San Joaquin Valley: Dry
- Monthly evaluations
final allocation typically issued in May



- ❖ Allocations:
 - Dec 2024: 5% initially; increased to 15% in late Dec
 - January 2025: increased to 20%
 - February 2025: increased to 35%
 - March 2025: increased to 40%
- ❖ State Water Contractor coordination ongoing

Typical Reservoir Operations:

- Releases for instream flow and Delta reqt's
- Minimum releases for storage conservation
- Flood control operations



- ❖ February 2025: Flood control releases began
- ❖ April 2025: Beginning of refill period

Export Operations:

- Capture storm flows to move to San Luis Reservoir storage for later in the year
- Adjust for Delta requirements and ESA/CESA fisheries protections



- ❖ ESA/CESA fisheries protections in place
 - Reduced exports began mid-December
- ❖ Close coordination with Reclamation, CDFW, NMFS and USFWS on Delta operations



PERMIT ACTIONS

Old and Middle River (OMR) Actions in WY 2025

	Dec	Jan				Feb					Mar					Apr		
OMR Management Season			X	X		X	X		X	X		X	X	X	X	X	X	X
Delta Smelt		X	X	X	X							X	X	X	X	X	X	X
Longfin Smelt																		
Salmon (Winter Run)															X	X	X	X
Steelhead																		
Spring Outflow																		
Storm Flex																		



ITP & PA/BiOps



OMRI of -6250



OMRI of -2000



ITP Only



OMRI of -5000

X

Controlling Exports



PA/BiOps Only



OMRI of -3500

Looking Ahead → 2025 SWP Summer/Fall Operations

- ❖ July through September: Increased Feather River releases of stored water from Lake Oroville:
 - Meet Delta outflow and water quality requirements
 - Maximize south Delta exports
- ❖ Summer/Fall ESA/CESA SWP Actions – Delta smelt habitat improvement
 - Currently evaluating summer flow alternatives through Structured Decision Making
 - Suisun Marsh Salinity Control Gates operations if WYT is Above Normal
 - No SMSCG operation if WYT is Wet
- ❖ Late Fall/Winter: Oroville storage conservation and 2026 planning begins



Thank You



Tracy Hinojosa, PE
SWP Water Management
Tracy.Hinojosa@water.ca.gov