

# Harvest Water Program

Draft Contract for the  
Administration of Public  
Water Quality Benefits



California Water Commission Meeting, March 2023

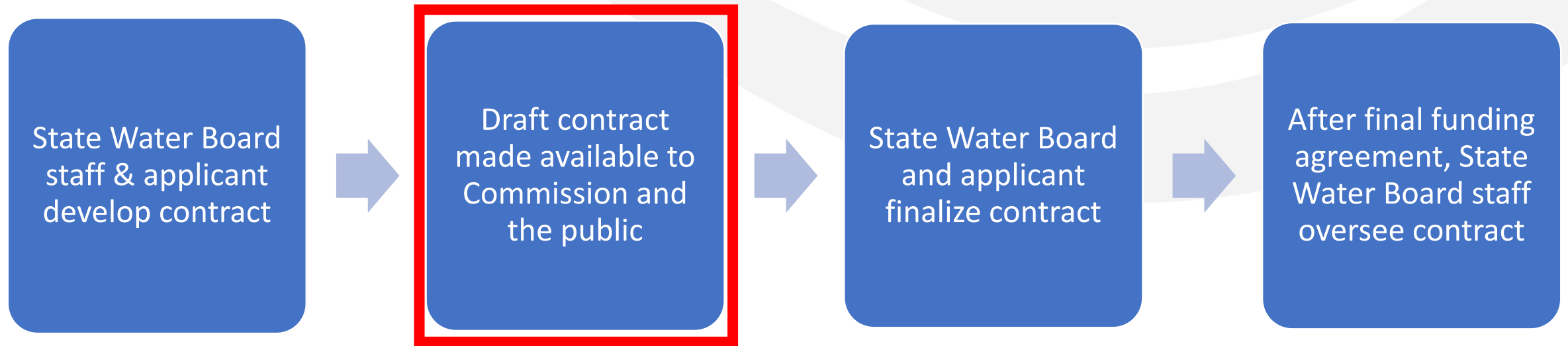
# Presentation Overview

1. State Water Board roles
2. Overview of contracting process
3. Overview of Harvest Water water quality benefit
4. Draft Contract details
5. Benefit changes from 2017

# State Water Board Administering Agency Roles

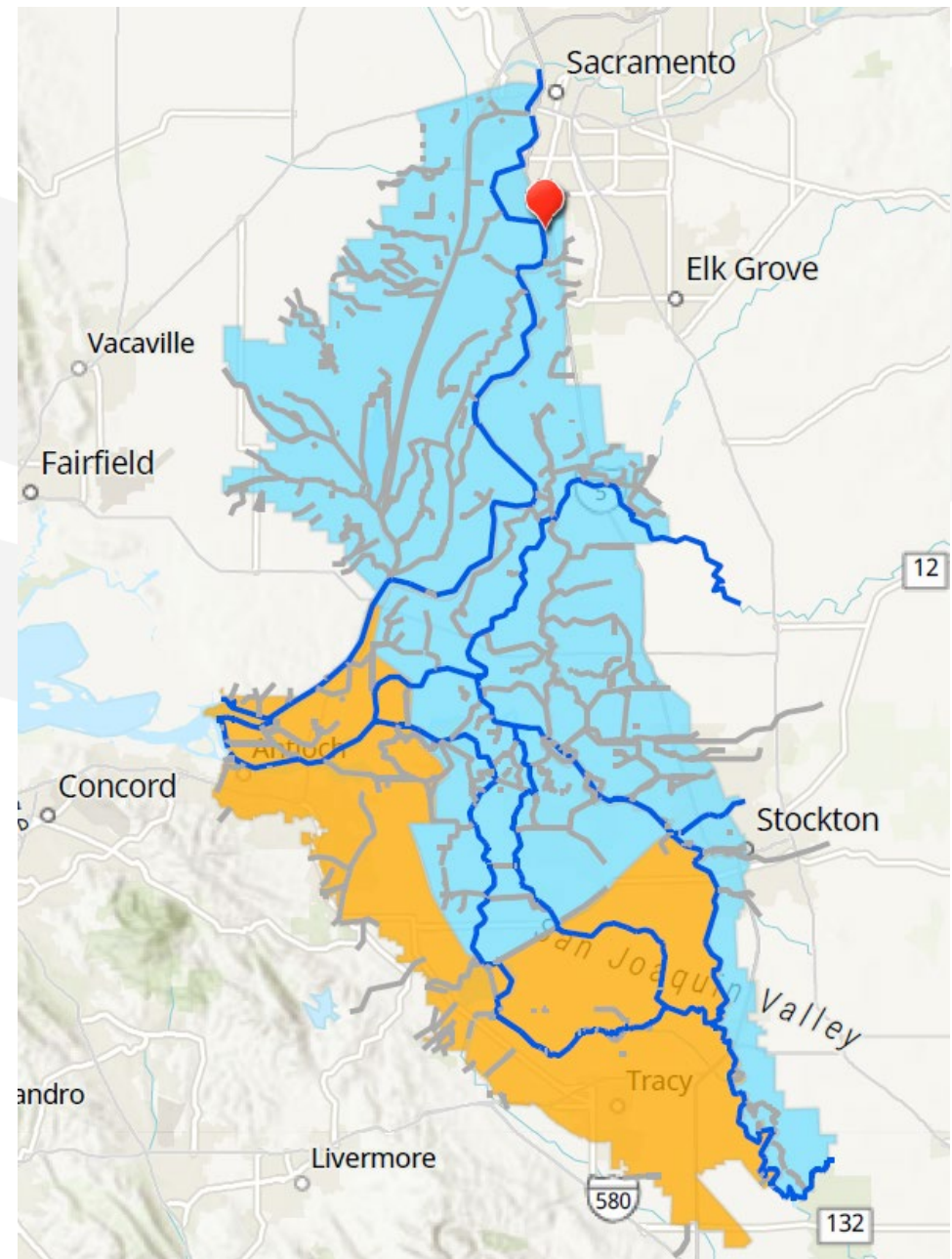
1. Identified water quality priorities and criteria for assessing “relative environmental value” for the WSIP process.
2. Conducted technical review of WSIP applications for projects that proposed water quality public benefits.
3. Will contract for the administration of public benefits for any project that provides water quality benefits consistent with WSIP.

# Contracting Process



# Harvest Water Program: Water Quality Benefit

- Currently, treated wastewater and associated salts are discharged to the Sacramento River (red bubble).
- Program would deliver much of that water to farmers and habitat in Sacramento County, decreasing salt-loading in Delta Waterways impaired for salinity (orange areas)



# Harvest Water: Draft Contract Overview

- Basic structure of the Draft Contract mirrors California Department of Fish and Wildlife's.
- Draft Contract focuses on how much recycled water Regional San delivers to users.
  - Salinity of recycled water depends on the salinity of influent to the Sacramento Regional Wastewater Treatment Plant.
  - Measuring or managing for specific improvements in impaired Delta Waterways is impractical.

# Harvest Water: Draft Contract Overview

- Performance Threshold: *“Quantity of public water quality benefit expected to be achieved by implementation of with-project actions compared to without-project actions, based on best available science at the time of contract execution.”*
- Adaptive Management Trigger: *“an event, situation, or measurement that initiates or requires a management action.”*
  - Based on five-year average of deliveries compared to Performance Thresholds



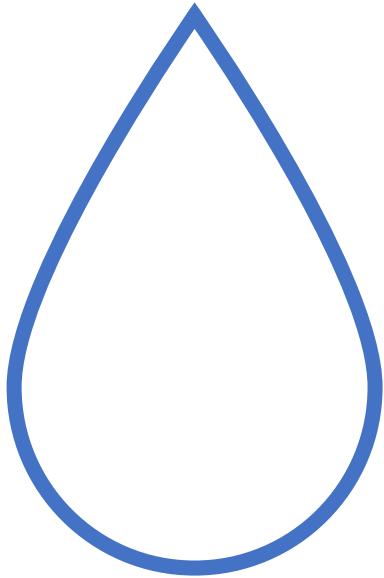
# Harvest Water: Water Quality Performance Thresholds

- Performance Thresholds are annual volumes of water delivered and vary based on hydrologic conditions.
  - **41,250 acre-feet per year (AFY)** (Default)
  - 25,000 AFY\* (Shasta Critical years)
  - 33,125 AFY\* (all other Dry and Critically Dry water years)
  - Performance Threshold will be reduced by 1,750 AFY for every wintertime month with > 5 inches of rain (up to 8,750 AFY)

\* While relevant permit restrictions are in effect



# Adaptive Management Actions, as needed



- Increase recycled water delivery contracts to increase anticipated volume of water to be delivered.
- Implement reasonable and feasible incentives, such as price adjustments or other financial incentives, for landowner participation. Participation in this context means enrolling in the Program or purchasing water.
- Secure longer-term agreements for landowner participation in the Program.
- Other actions mutually agreed upon by Regional San and the State Water Board

# Harvest Water: Water Quality Benefit Changes

- WSIP regulations acknowledge that public benefit amounts could change from what was described in the funding application.

## 2017 WSIP Application

- Delivery of **50,000** acre-feet per year
- **84** years of water quality benefit

## 2023 Draft Contract

- Delivery of **16,250 – 41,250** acre-feet per year
- **TBD** years of water quality benefit

# Questions?

Sarah Sugar  
Senior Environmental Scientist  
[Sarah.sugar@waterboards.ca.gov](mailto:Sarah.sugar@waterboards.ca.gov)