

April 27, 2026



# PHILANTHROPIC AND NGO SUPPORT FOR TRIBAL STEWARDSHIP: CALIFORNIA CASE STUDIES

---

CNRA Tribal Stewardship Economy Webinar Series  
Philanthropy 101 for Tribal Stewardship



# TCF'S PARTNERSHIPS WITH INDIGENOUS COMMUNITIES

- ~120 projects completed across the U.S.
- Minnesota Heritage Forest: 31,223 acres conveyed to four tribal nations (2022)
- Pedro Bay Corporation: 44,000-acre conservation easement (2022)
- Sand Creek Massacre National Historic Site: 3,500-acre NPS acquisition (2022)
- Current projects in Alaska, Illinois, Maine, Massachusetts, Washington, and elsewhere

# CALIFORNIA CASE STUDIES

**Hupa Mountain | 10,395 acres | Completed 2023**

**Folsom Ranch | 3,091 acres | Ongoing**

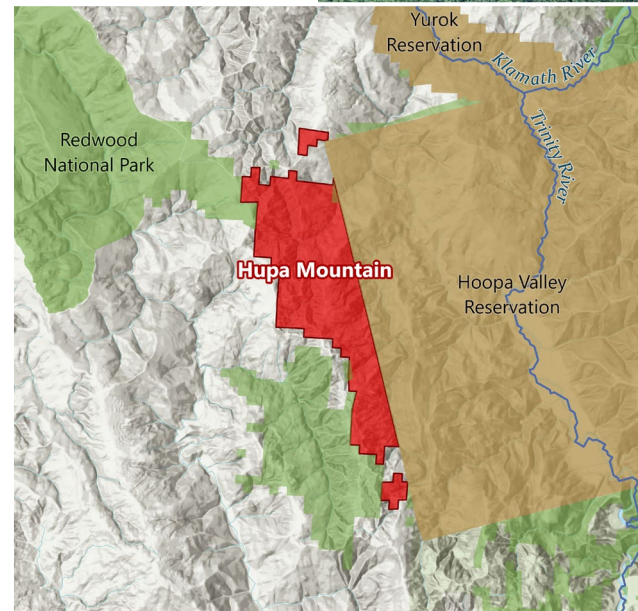
**Yowlumne Hills | 17,030 acres | Completed 2025**



# HUPA MOUNTAIN

## Hoopa Valley Tribe

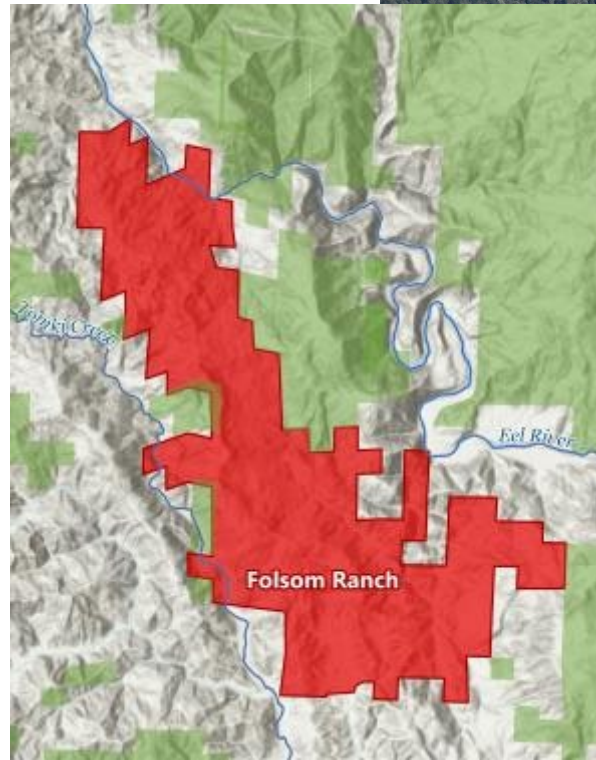
- **10,395 acres** adjoining Hoopa Valley Reservation and Redwood NP
- **\$16M** fundraise, including **\$1.9M** for planning & stewardship
- Funding from CA Natural Resources Agency, State Coastal Conservancy, and private funders
- Benefits to watershed, fisheries, forest health, fire risk reduction
- Existing CARB carbon project
- Direct acquisition from Australia-based asset manager



# FOLSOM RANCH

Sherwood Valley Band of Pomo Indians  
Cahto Tribe of the Laytonville Rancheria  
Potter Valley Tribe

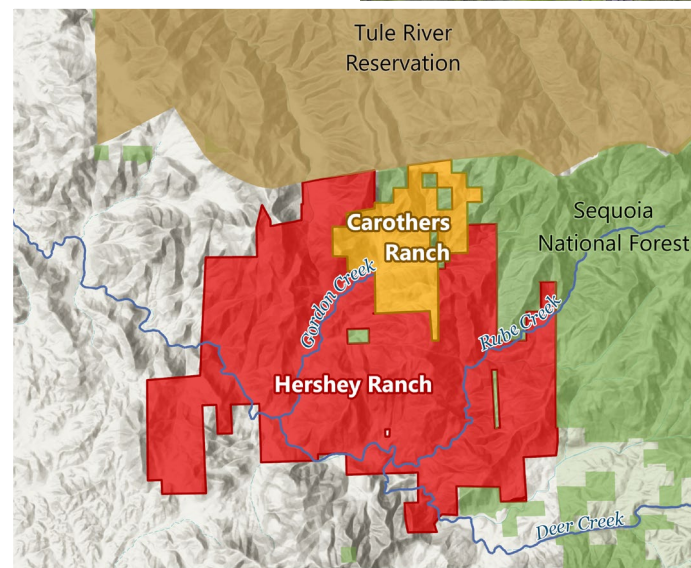
- **3,091 acres** to be returned to tribal stewardship; **3,946 acres** to BLM for tribal and public access to Eel River
- **\$10.9M** total fundraise ongoing
- Partial funding secured from CA Natural Resources Agency and private funders
- Benefits to watershed, fisheries, forest health, fire risk reduction
- TCF serving as bridge owner to secure the opportunity



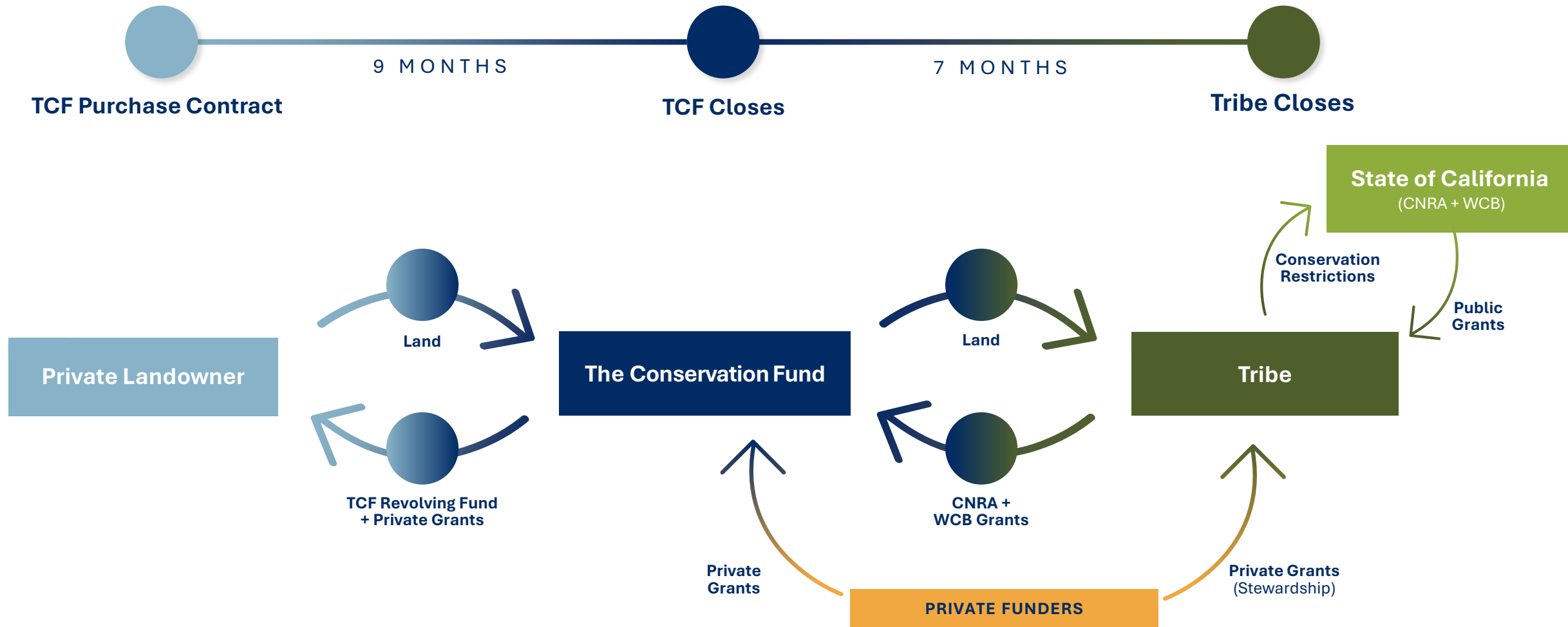
# YOWLUMNE HILLS

## Tule River Indian Tribe

- **17,030 acres** adjoining Tule River Reservation and Giant Sequoia NM
- **\$19M** fundraise, including **\$2.8M** for planning & stewardship
- Funding from CA Natural Resources Agency, Wildlife Conservation Board, and private funders
- Reintroduction of tule elk and beaver; habitat for CA condor
- TCF served as bridge owner of both properties to secure the opportunity



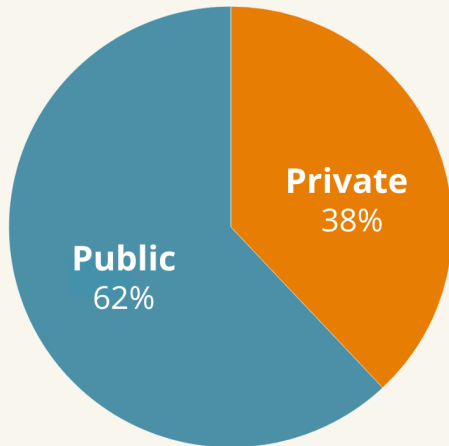
# YOWLUMNE HILLS: TRANSACTION STRUCTURE



# YOWLUMNE HILLS: FUNDING

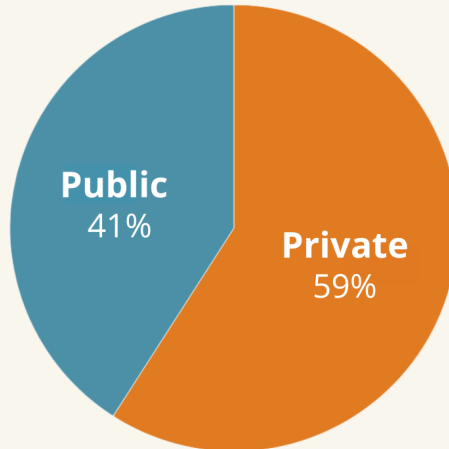
## TRIBE'S ACQUISITIONS

**Hershey Ranch**  
(14,673 Acres)



Total: \$13,135,475

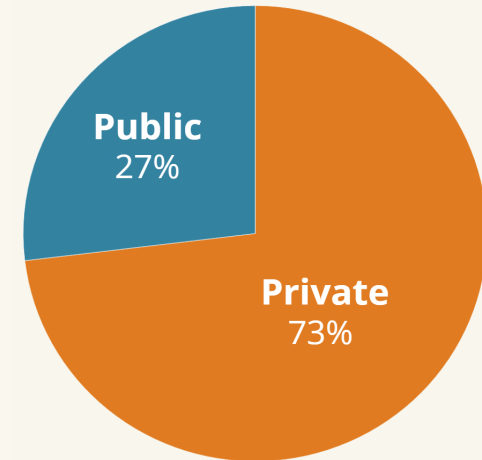
**Carothers Ranch**  
(2,357 acres)



Total: \$3,064,000

## TRIBE'S PLANNING AND STEWARDSHIP

**Both Ranches**  
(17,030 acres)



Total: \$2,788,000

**Total Fundraise for Tribe's Acquisitions, Planning & Stewardship: \$18,987,475**

# BUILDING THE PARTNERSHIPS

- Connecting early and broadly
- Building internal and external capacity
- Right-sizing the project for impact and feasibility
- Sustaining the team
- Celebrating success



Photo Credit: Max Whittaker / CA Native Plant Society

# FLORA

California's Plants | People | Places  
A Publication of the California Native Plant Society

## THE RETURN

How the Tule River Tribe reclaimed 17,000 acres of ancestral land in a conservation win for California

ALSO

A conversation with Geneva E.B. Thompson  
Good fire in Yolo County  
Spotlight on youth engagement

**QUESTIONS?**



Photo Credit: Max Whittaker / CA  
Native Plant Society