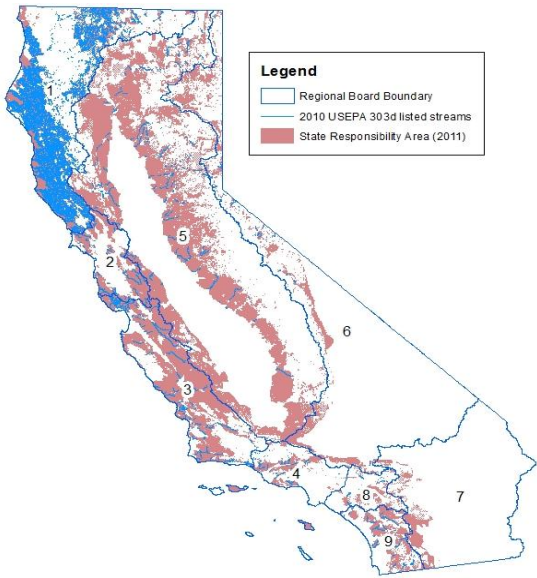


State Water Resources Control Board Assessment of State Responsibility Area



Legend
 - Regional Board Boundary
 - 2010 USEPA 303d listed streams
 - State Responsibility Area (2011)



Legend
 - Timber Production Zones, including State Forests
 - Non-TPZ private timberlands

Regional Board	Non Federal Forest and Timberland	Acres	% of Region Area
1	State Responsibility Area	6,075,399	49%
	Forestland within SRA	4,630,742	37%
	Timber Production Zone	3,861,920	31%
2	State Responsibility Area	1,384,882	48%
	Forestland within SRA	637,828	22%
	Timber Production Zone	23,409	1%
3	State Responsibility Area	4,603,485	63%
	Forestland within SRA	1,377,878	19%
	Timber Production Zone	57,548	1%
4	State Responsibility Area	672,279	24%
	Forestland within SRA	89,050	3%
	Timber Production Zone	-	0%
5	State Responsibility Area	14,003,861	37%
	Forestland within SRA	7,043,353	19%
	Timber Production Zone	1,371,130	4%
6	State Responsibility Area	2,168,590	10%
	Forestland within SRA	458,357	2%
	Timber Production Zone	127,328	0.6%
7	State Responsibility Area	693,098	5%
	Forestland within SRA	101,917	1%
	Timber Production Zone	-	0%
8	State Responsibility Area	368,918	21%
	Forestland within SRA	38,469	2%
	Timber Production Zone	-	0%
9	State Responsibility Area	1,069,412	43%
	Forestland within SRA	122,852	5%
	Timber Production Zone	-	0%
Statewide		31,039,923	31%
¹ Forestland within SRA		14,500,446	14%
² Timber Production Zone		5,441,335	5%
⁴ Non Federal Area		52,854,778	52%

¹ Cal Fire 2011 State Responsibility Area <http://frap.fire.ca.gov/assessment2010/data.html> [SRA11_2.gdb]
² Cal Fire 2010 Statewide Land Use / Land Cover Mosaic: Forestland (within SRA) <http://frap.fire.ca.gov/assessment2010/data.html> [input_fveg6_2.gdb]
³ TPZ: Board of Equalization <http://www.boe.ca.gov/proptaxes/apscont.htm>
 TPZ and NonTPZ image source: Shih, Tian-Ting. Timberland Conversion in California from 1969 to 1998: Technical Working Paper 1-01-02

PRC. CODE § 4126

The board shall include within state responsibility areas all of the following lands:

- (a) Lands covered wholly or in part by forests or by trees producing or capable of producing forest products.
- (b) Lands covered wholly or in part by timber, brush, undergrowth, or grass, whether of commercial value or not, which protect the soil from excessive erosion, retard runoff of water or accelerate water percolation, if such lands are sources of water which is available for irrigation or for domestic or industrial use.
- (c) Lands in areas which are principally used or useful for range or forage purposes, which are contiguous to the lands described in subdivisions (a) and (b).

PRC. CODE § 4127

The board shall not include within state responsibility areas any of the following lands:

- (a) Lands owned or controlled by the federal government or any agency of the federal government.
- (b) Lands within the exterior boundaries of any city, except a city and county with a population of less than 25,000 if, at the time the city and county government is established, the county contains no municipal corporations.
- (c) Any other lands within the state which do not come within any of the classes which are described in Section 4126.

PRC. CODE § 4130

The board shall classify all lands within state responsibility areas into types of land based on cover, beneficial use of water from watersheds, probable damage from erosion, and fire risks and hazards, and shall determine the intensity of protection to be given to each such type of land. A plan for adequate statewide fire protection of state responsibility areas shall be prepared by the board in which all land of each type shall be assigned the same intensity of protection, and the estimated cost of such intensity of protection shall be determined.

303d listed stream miles within SRA		Regional Board									
Pollutant ⁵		1	2	3	4	5	6	7	8	9	subtotal
Sedimentation/Siltation	2,478	23	92				34				2,627
Aluminum	1,517					12	0			0	1,529
Mercury			23	1		292	15				331
Boron				225	11	50					286
Escherichia coli (E. coli)				89		192					280
Diazinon			209			5				8	223
Nutrients	37	25	10			134		2			207
Chlorpyrifos				23		119				50	193
Chloride				124	36	5	0			7	172
Fecal Coliform				106	7	44					157
Sediment	151										151
Unknown Toxicity						119					119
Pathogens		2	14				42	47			104
Selenium										83	83
Low Dissolved Oxygen			11	10		29					50
Indicator Bacteria	33	1			8			2		5	48
Temperature, water				38		2					41
Iron						12	13				40
Coliform Bacteria			21		17						38
Enterococcus				25						12	36
Ammonia (Unionized)				35							35
Copper					1	24		6			31
Oxygen, Dissolved						28	1				30
Chlordane				26							26
pH				4		17		4			24
Ammonia					23						23
Toxicity										22	22
Total Nitrogen as N							1			20	21
DDT (Dichlorodiphenyltrichloroethane)										21	21
Benthic-Macroinvertebrate Bioassessments					20						20
Total Dissolved Solids							18				18
Metals				16			2				18
Invasive Species					1	16					17
Pumping					17						17
DDE (Dichlorodiphenyldichloroethylene)						16				0	16
Ammonia as Nitrogen										15	15
Nitrate and Nitrite					14						14
Sulfates					14						14
Lead					9						9
Manganese							9				9
Aldicarb						9					9
Chlorophyll-a				9							9
PCBs (Polychlorinated biphenyls)						9					9
Fluoride							8				8
Cadmium						3		5			8
Salinity							7				7
Trash		4		2							6
Fish Barriers (Fish Passage)					6						6
Phosphorus										6	6
Nitrate							5				5
Turbidity				4						2	5
Algae					5						5
Sodium				4							4
Electrical Conductivity				4							4
Arsenic						3					3
Salinity/TDS/Chlorides								3		3	3
Nitrogen								3			3
Acid Mine Drainage										3	3
Bacteria						2					2
Sediment Toxicity			1							1	2
(blank)				1							1
ChemA (tissue)					1						1
pH (low)						1					1
Pyrethroids			1								1
Azinphos-methyl (Guthion)						0					0
Total listed stream miles within SRA	4,215	321	859	192	1,152	152	-	68	265	7,224	

⁴ Non Federal Lands: CPAD 1.8 <https://projects.atlas.ca.gov>

⁵ SWRCB 2010 Integrated Report: Data Download <http://www.waterboards.ca.gov/water_issues/programs/tmdl/integrated2010.shtml> [2010_303d_EPAapr_lines121211.shp]
 <http://gispublic.waterboards.ca.gov/pub/303d/2010_USEPA_approv_303d_List_Final_122311wsrcs.xls>
 [2010_USEPA_approv_303d_List_Final_122311wsrcs.xls]