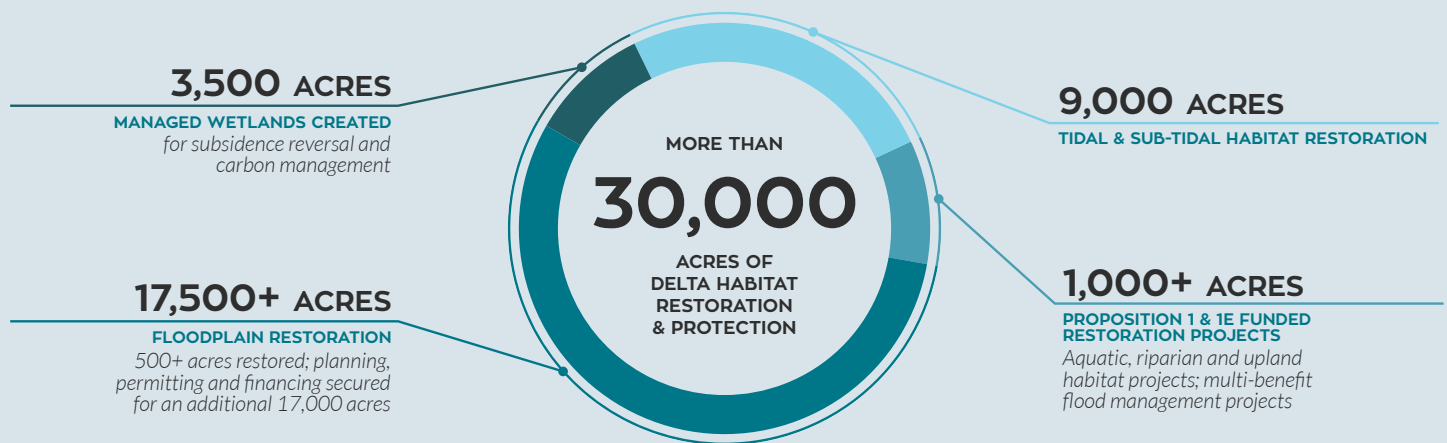


# RESTORING THE SACRAMENTO-SAN JOAQUIN DELTA ECOSYSTEM

## WHAT IS CALIFORNIA ECO RESTORE?

California EcoRestore is a California Natural Resources Agency initiative implemented in coordination with state and federal agencies to advance the restoration of at least 30,000 acres of Sacramento-San Joaquin Delta (Delta) habitat by 2020. Driven by world-class science and guided by adaptive management, California EcoRestore will pursue habitat restoration projects with clearly defined goals, measurable objectives, and financial resources to help ensure success. The types of habitat targeted include tidal wetlands, floodplain, upland, riparian, fish passage improvements and others.

## RESTORATION TARGETS



## RESTORATION COMPONENTS



### RESTORATION PROJECTS

Projects contributing to the long-term health of the Delta through restoration and related activities.



### PLANNING

Additional priority restoration projects will be identified through regional and locally-led planning facilitated by the Delta Conservancy. Regionally specific strategies will be developed with stakeholders for the Cache Slough, West Delta, Cosumnes, and South Delta regions to help guide restoration efforts. The program will coordinate and leverage existing regional plans, and local conservation plans.



### ADAPTIVE MANAGEMENT

California EcoRestore projects will be guided by a multi-agency developed comprehensive adaptive management approach founded in the best available science. The approach will utilize specific goals and objectives to guide monitoring and habitat management efforts. It will build on the principles for adaptive management established in the Delta Plan and the Delta Science Plan, including the adaptive management cycle.

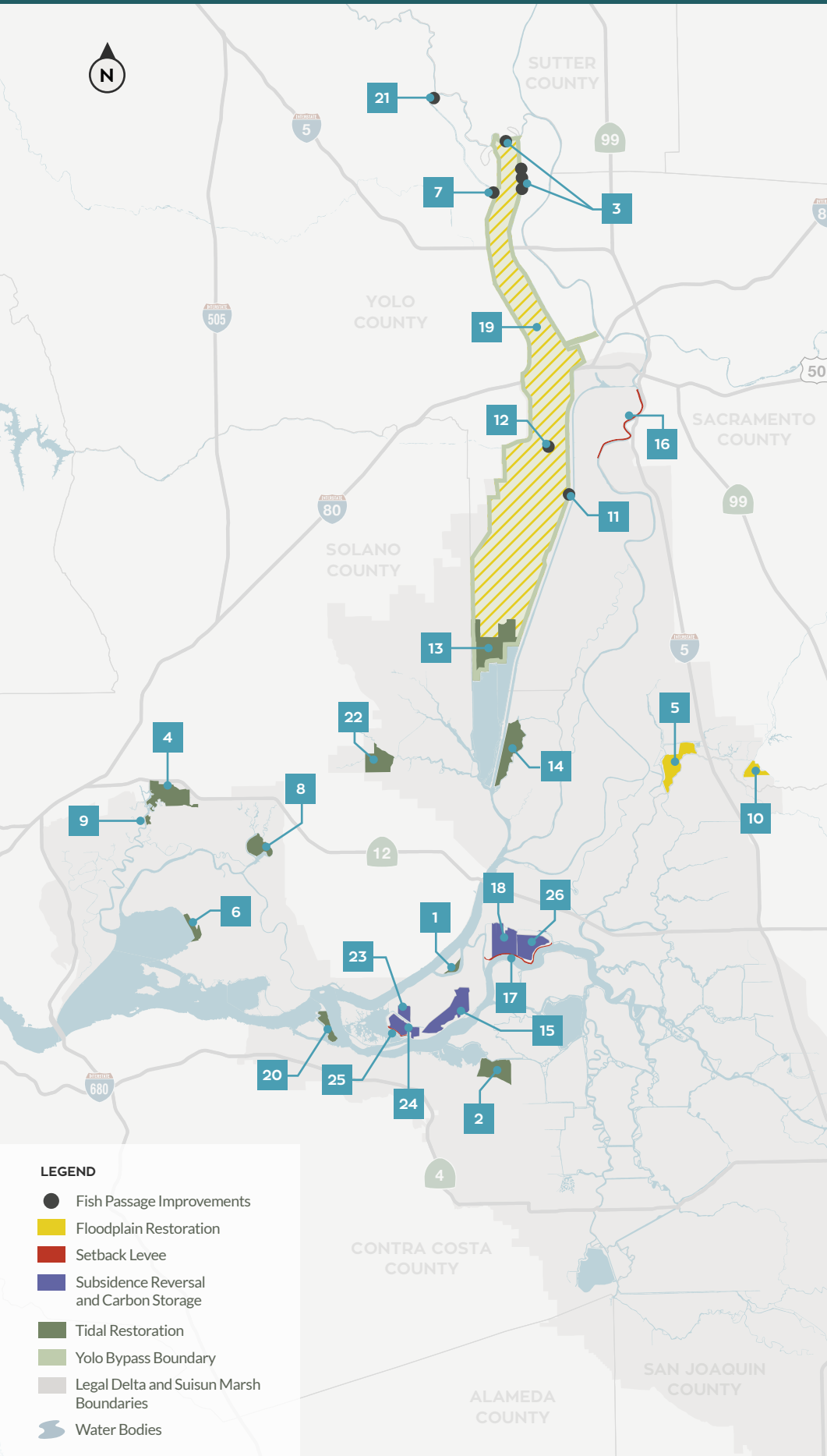
## FUNDING

Costs for California EcoRestore projects are expected to reach at least \$300 million in the first four years, the majority of which will be borne by the state and federal public water agencies currently required to mitigate the ecological impacts of the State Water Project (SWP) and Central Valley Project (CVP) in the Delta.

Funding for habitat enhancements unassociated with mitigation will come primarily from Propositions 1 and 1E, the AB 32 Greenhouse Gas Reduction Fund, and local, federal, and private investment.



CALIFORNIA ECO RESTORE PROJECTS



**2016 / 2017**  
(Target Construction Start Dates)

1	Decker Island
2	Dutch Slough
3	Fremont Weir Adult Fish Passage Modification
4	Hill Slough
5	McCormack Williamson Tract
6	Tule Red
7	Wallace Weir Fish Rescue Facility

**2018+**  
(Target Construction Start Dates)

8	Bradmoor Island
9	Goat Island
10	Grizzly Slough
11	Lisbon Weir
12	Lower Putah Creek Realignment
13	Lower Yolo Ranch
14	Prospect Island
15	Sherman Island: Whale's Belly
16	Southport Levee
17	Twitchell Island: Levee
18	Twitchell Island: West End
19	Yolo Bypass Floodplain Restoration
20	Winter Island

**COMPLETED**  
(Construction Completed)

21	Knights Landing Outfall Gate
22	Lindsey Slough
23	Sherman Island: Mayberry Farms
24	Sherman Island: Whale's Mouth
25	Sherman Island: Mayberry Slough
26	Twitchell Island: East End

- LEGEND**
- Fish Passage Improvements
  - Floodplain Restoration
  - Setback Levee
  - Subsidence Reversal and Carbon Storage
  - Tidal Restoration
  - Yolo Bypass Boundary
  - Legal Delta and Suisun Marsh Boundaries
  - Water Bodies

