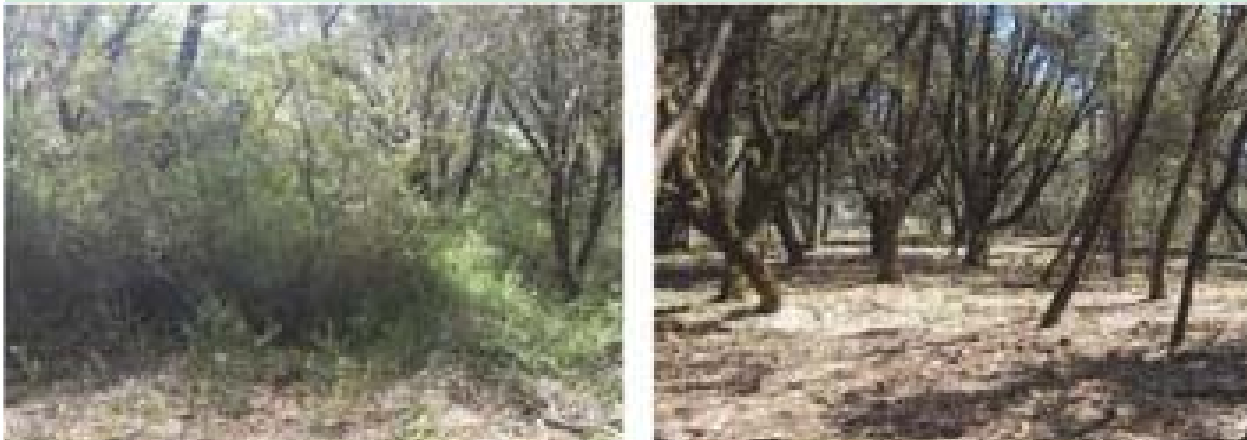




## Fuel Reduction at Lake Theodore



Lake Theodore in Placer County was identified by the California Department of Forestry and Fire Protection (CAL FIRE) as a high priority fire prevention location based on its proximity to Interstate 80, the Union Pacific railroad, power infrastructure, residential structures, and outdoor recreation at Lake Theodore. In response, California Conservation Corps crews, in partnership with CAL FIRE and the Placer County Water Agency, completed approximately 23 acres of fuel load reduction at the lake. With funding from the State Board of Forestry and Fire Prevention, crews set to work to remove ladder fuels, clear brush, and prune trees as a means of reducing the risk of wildfire in the area. Though the project was completed in June 2017, the improvements to forest health have made the area more resilient to wildfire and other impacts of climate change for years to come.



Images provided by the California Department of Forestry and Fire Protection

For more information about Safeguarding California and Climate Change Adaptation efforts in California, visit <http://resources.ca.gov/climate/safeguarding/>