

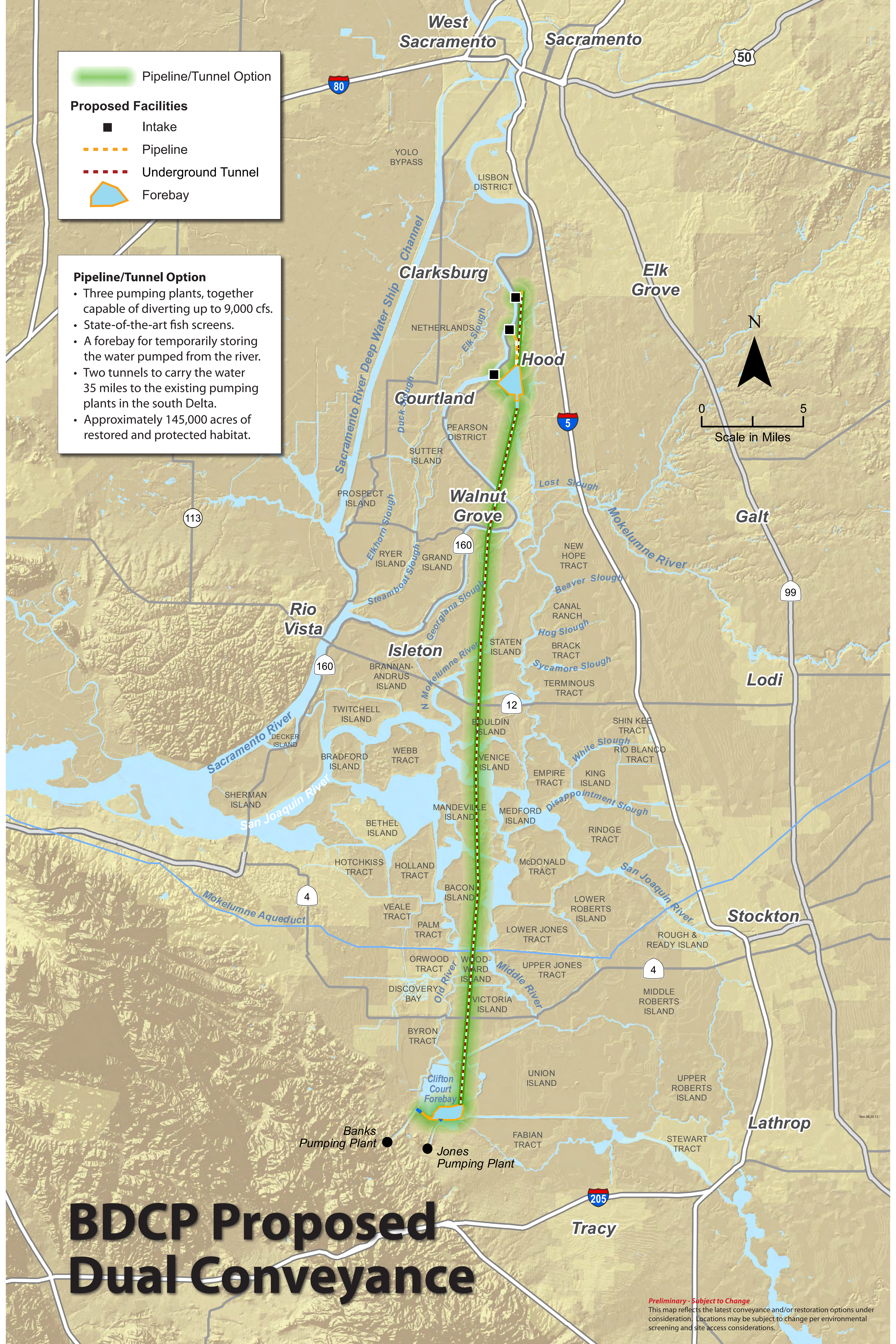
**Pipeline/Tunnel Option**

**Proposed Facilities**

- Intake
- Pipeline
- - - Underground Tunnel
- ▭ Forebay

**Pipeline/Tunnel Option**

- Three pumping plants, together capable of diverting up to 9,000 cfs.
- State-of-the-art fish screens.
- A forebay for temporarily storing the water pumped from the river.
- Two tunnels to carry the water 35 miles to the existing pumping plants in the south Delta.
- Approximately 145,000 acres of restored and protected habitat.



# BDCP Proposed Dual Conveyance

**Preliminary - Subject to Change**  
 This map reflects the latest conveyance and/or restoration options under consideration. Locations may be subject to change per environmental screening and site access considerations.